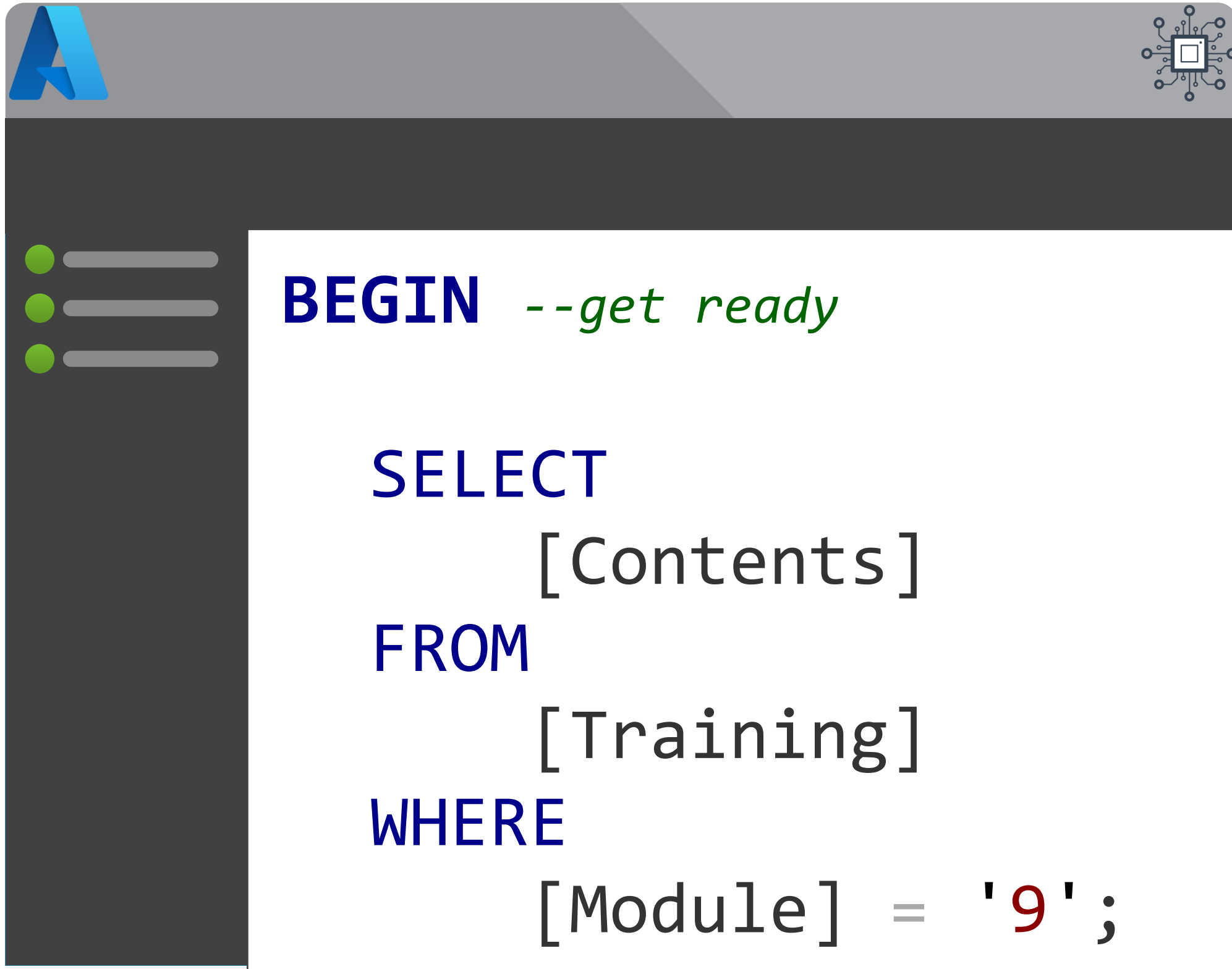


Module 9

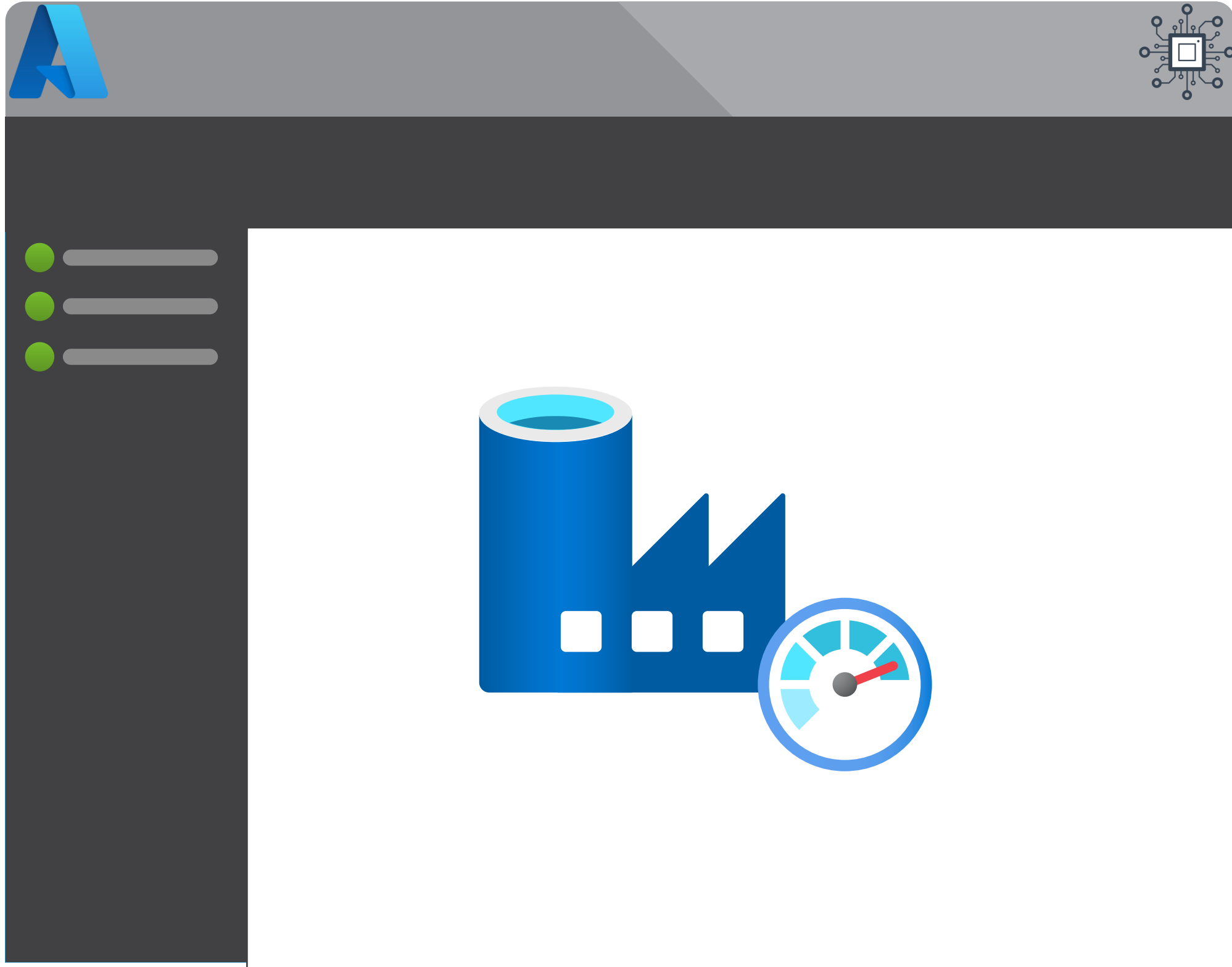
Monitoring & Alerting



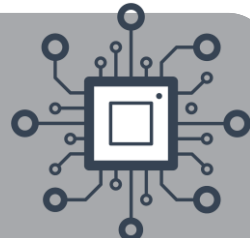
- Studio Monitoring
- Log Analytics & Kusto Queries
- Operational Dashboards
- Advanced Alerting

Module 9

Monitoring & Alerting

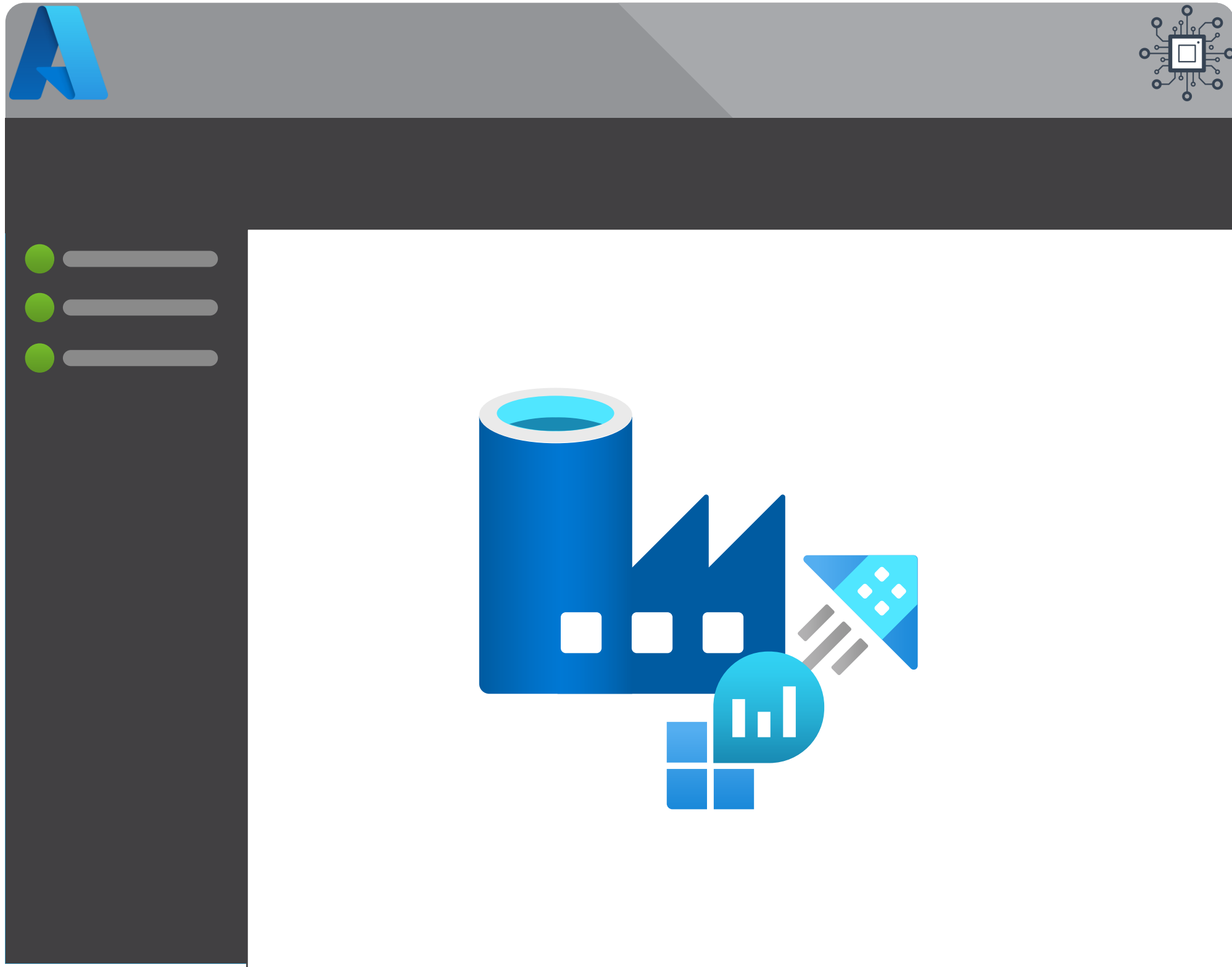


- Studio Monitoring
- Log Analytics & Kusto Queries
- Operational Dashboards
- Advanced Alerting



Module 9

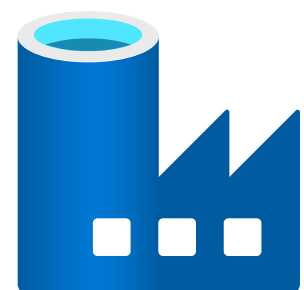
Monitoring & Alerting



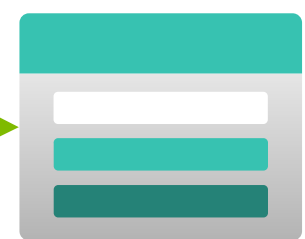
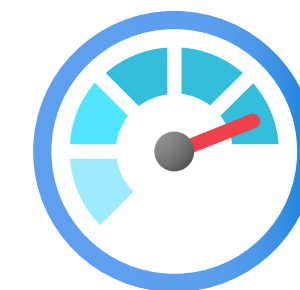
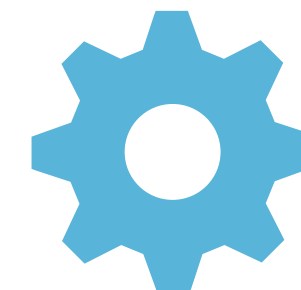
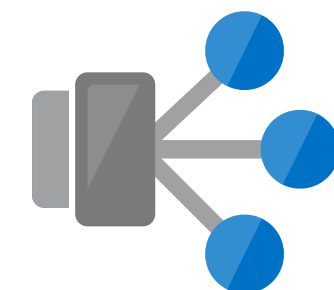
- Studio Monitoring
- Log Analytics & Kusto Queries
- Operational Dashboards
- Advanced Alerting



Diagnostic Settings



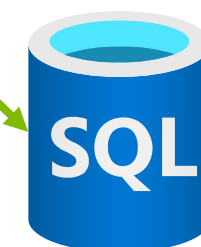
Log Analytics



Storage

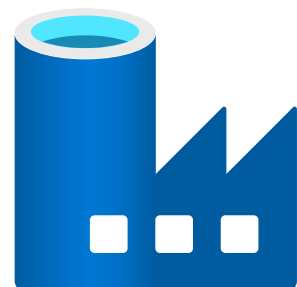
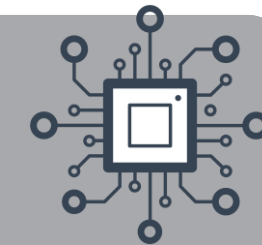


Event Hub

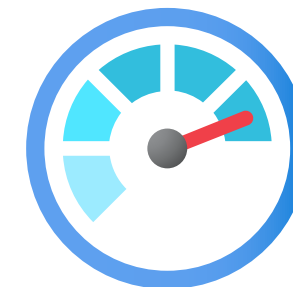
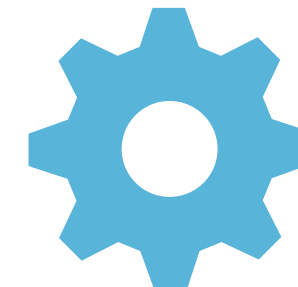
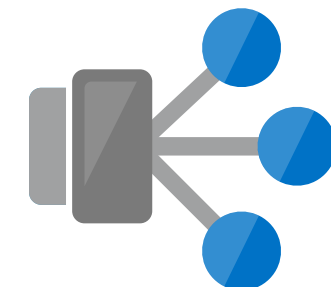


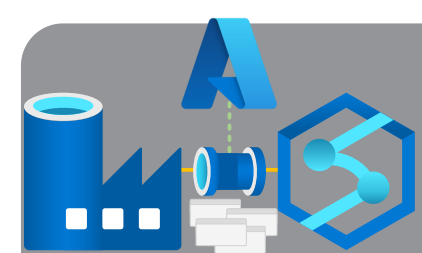


Diagnostic Settings

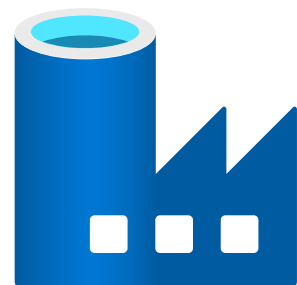
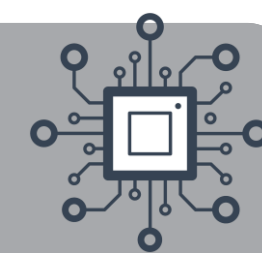


Log Analytics





Using Log Analytics



ADFPipelineRunDurations

| project

TimeGenerated,

Start,

End,

['DataFactory'] = substring(ResourceId, 121, 100),

Status,

PipelineName,

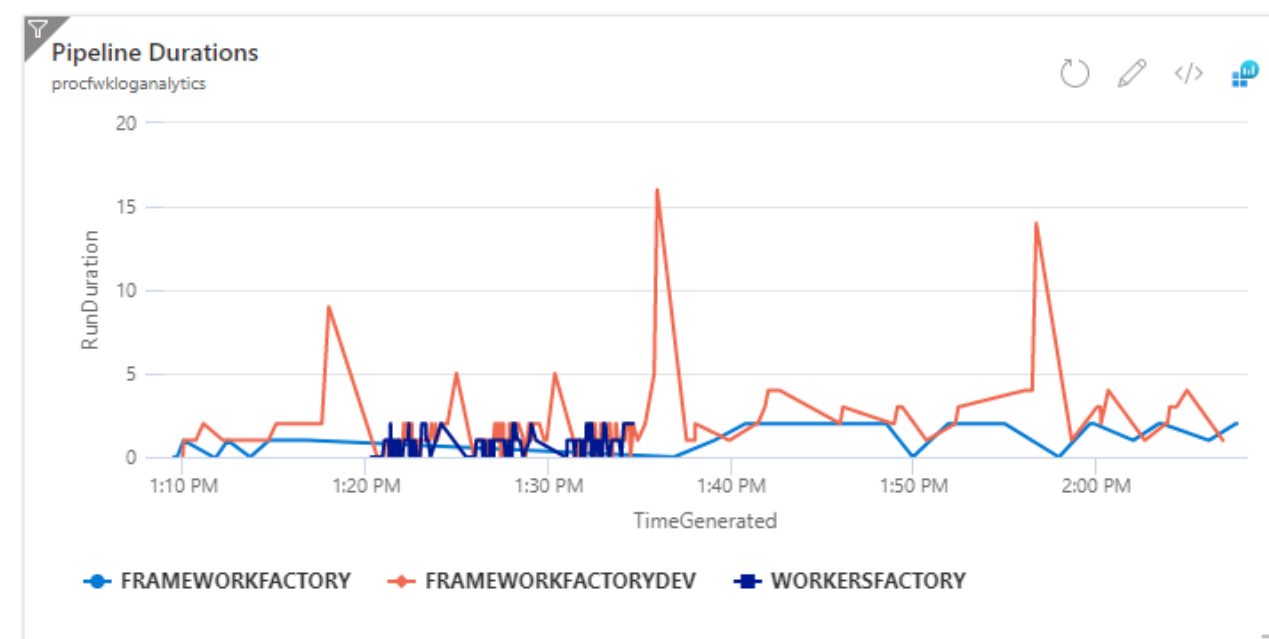
Parameters,

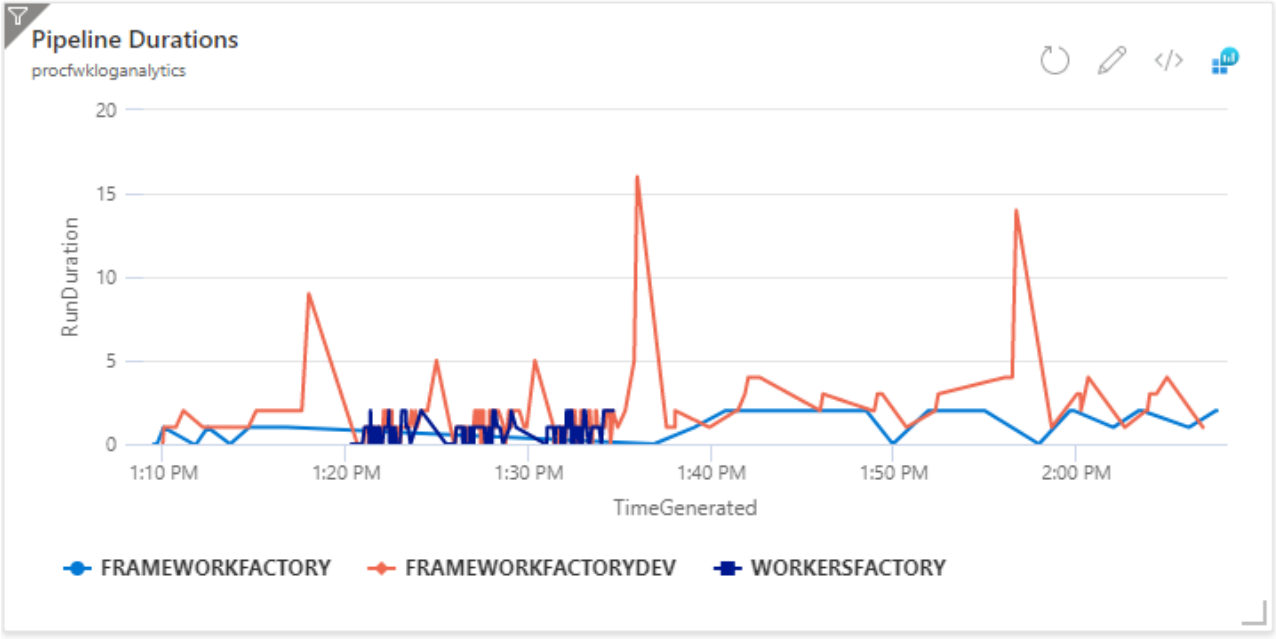
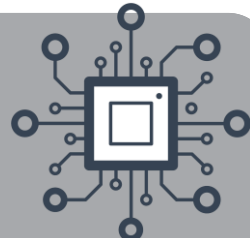
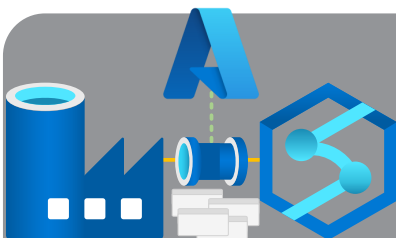
["RunDuration"] = datetime_diff('Minute', End, Start)

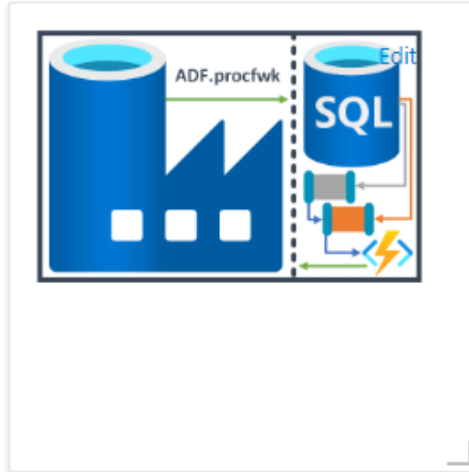
| where



TimeGenerated > ago(1h)

and Status !in ('InProgress', 'Queued', 'Cancelling')





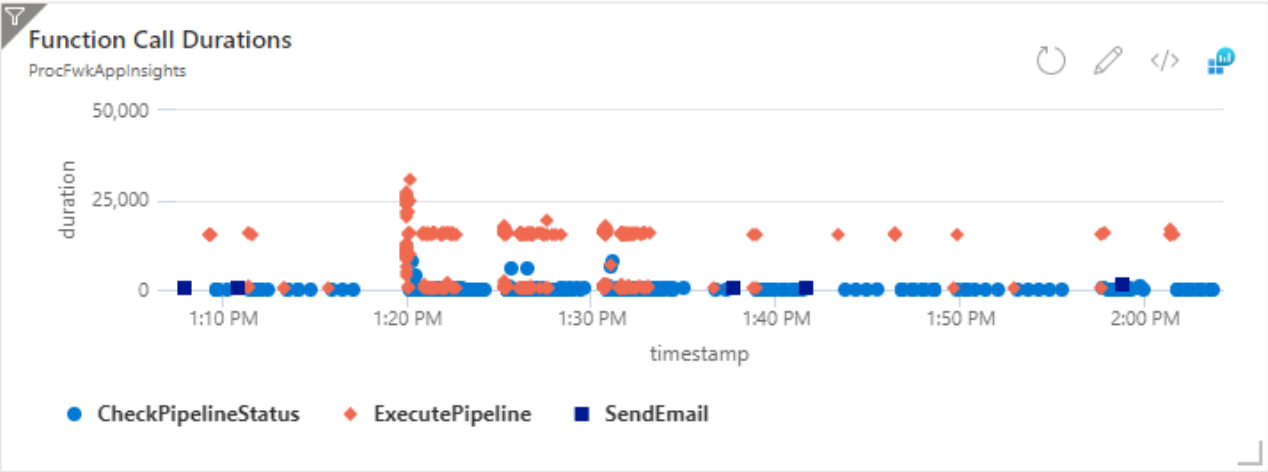



Resources and Content		Edit
	Blogs	mrpaulandrew.com/ADF.procfwk
	GitHub	github.com/mrpaulandrew/ADF.procfwk
	Twitter	#ADFprocfwk

FrameworkSupportF...


Function App

Running




ProcFwkAppInsights

Application Insights



procfwkloganalytics

Workspace



FrameworkFactor

Data factory

FrameworkFactor

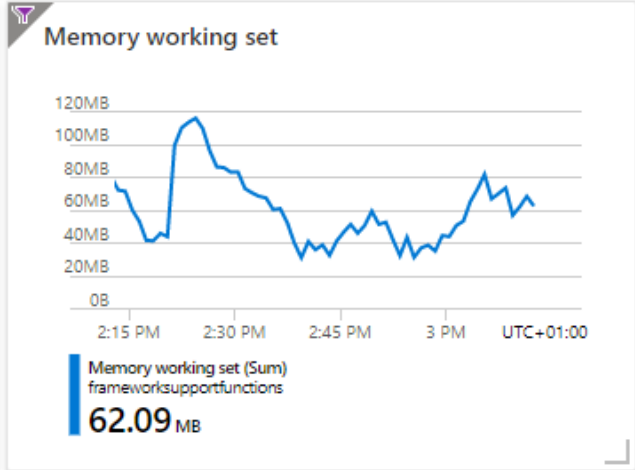
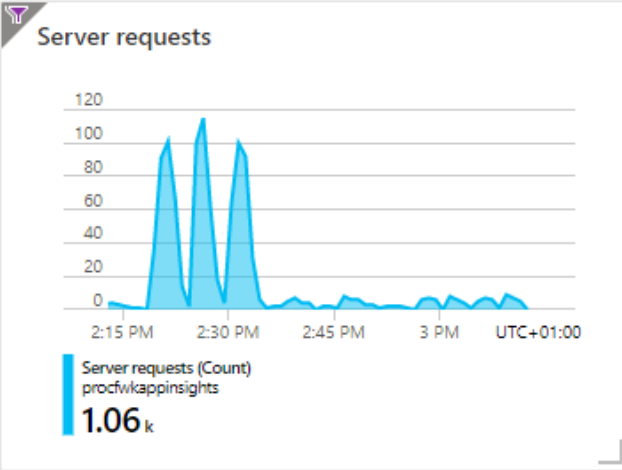
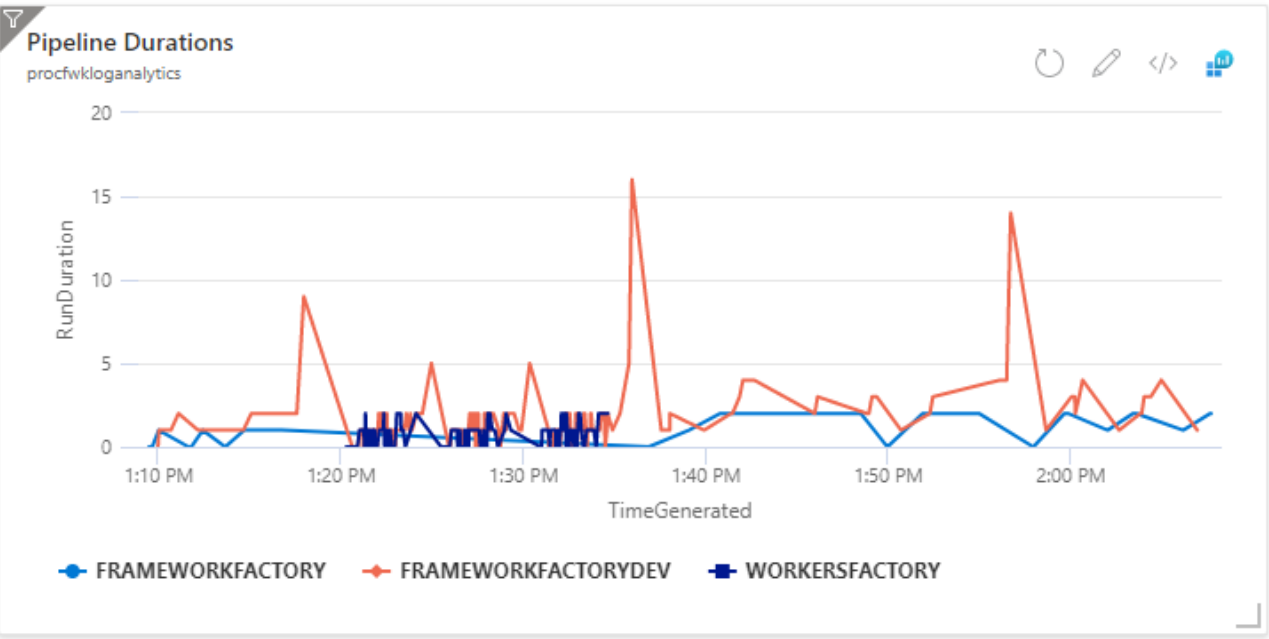
Data factory

FrameworkFactor

Data factory

WorkersFactory

Data factory

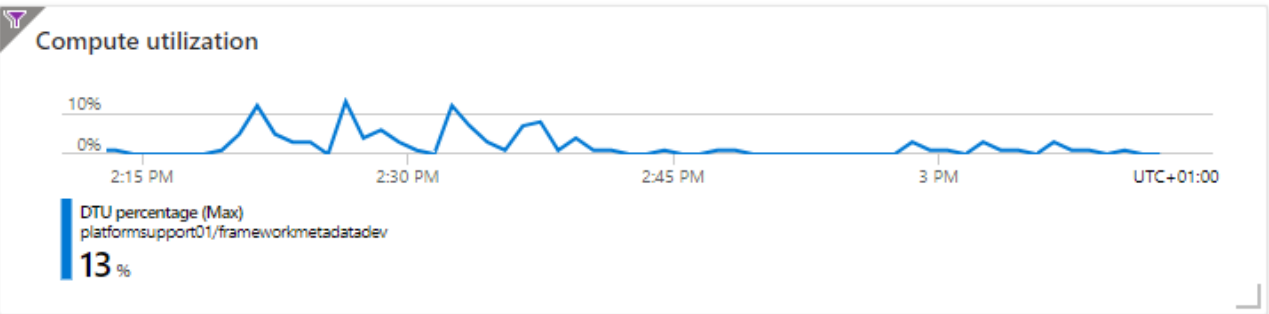



- Resources
- ADF.procfwk
- ProcFwkLogAnalytics
 - FrameworkFactory
 - FrameworkFactoryDev
 - FrameworkKeys
 - platformsupport01
 - FrameworkMetadataDev (pl...
 - frameworksupportstore
 - frameworkstorage01
 - FrameworkSupportFunctions
 - FrameworkFactoryTest
 - WorkersFactory
 - frameworkonsynapse
 - UKSouthPlan
 - FrameworkMetadataTest (pl...
 - ProcFwkAppInsights
 - 9a4fe00e-39d9-4ec8-8f88-5...
 - frameworkdatalake01
 - sqlvaexht4i7t63enw

FrameworkMetadat...

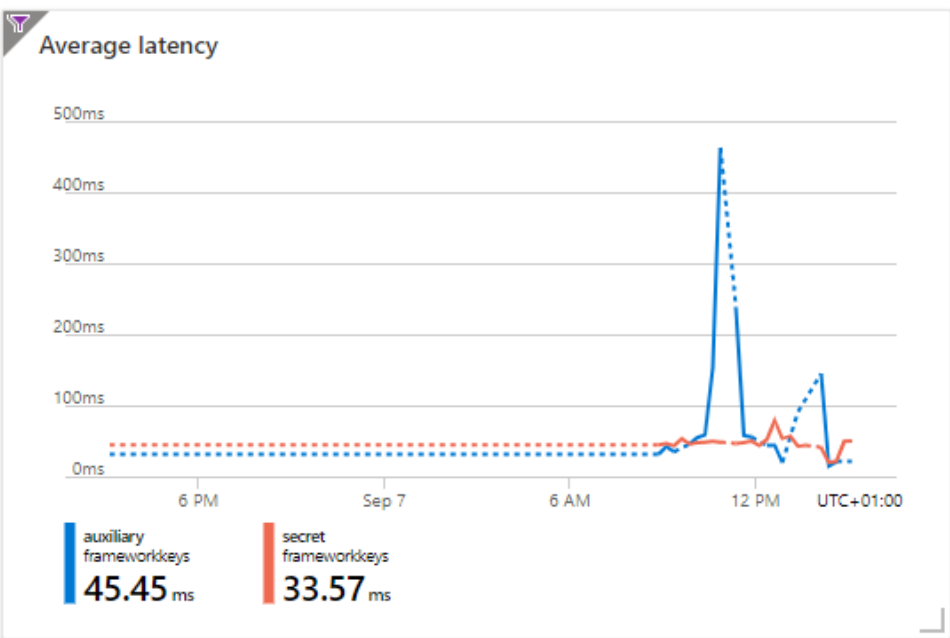

SQL database

Online



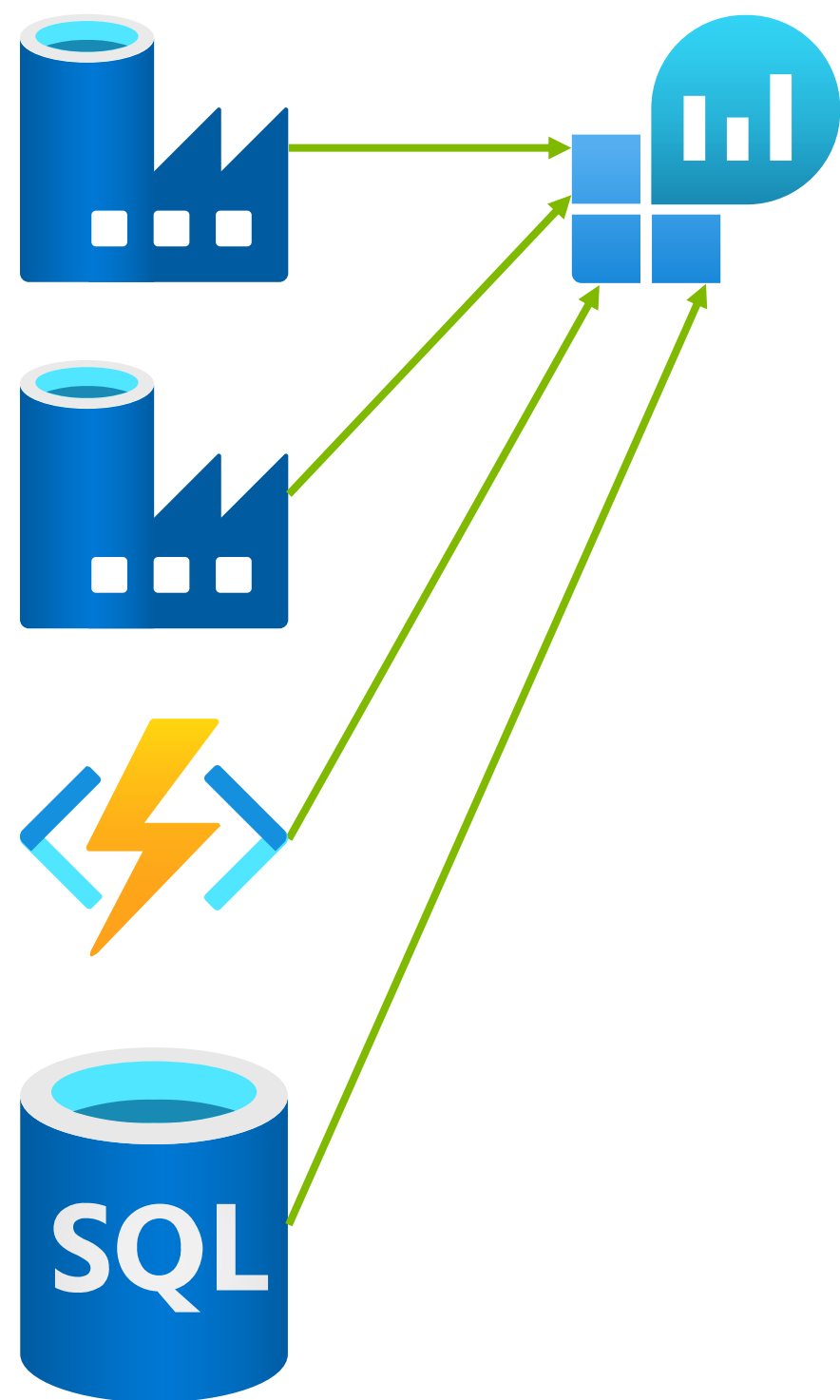
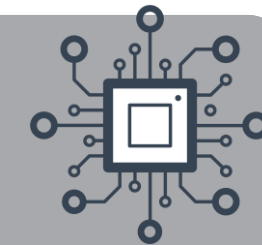
FrameworkKeys

Key vault

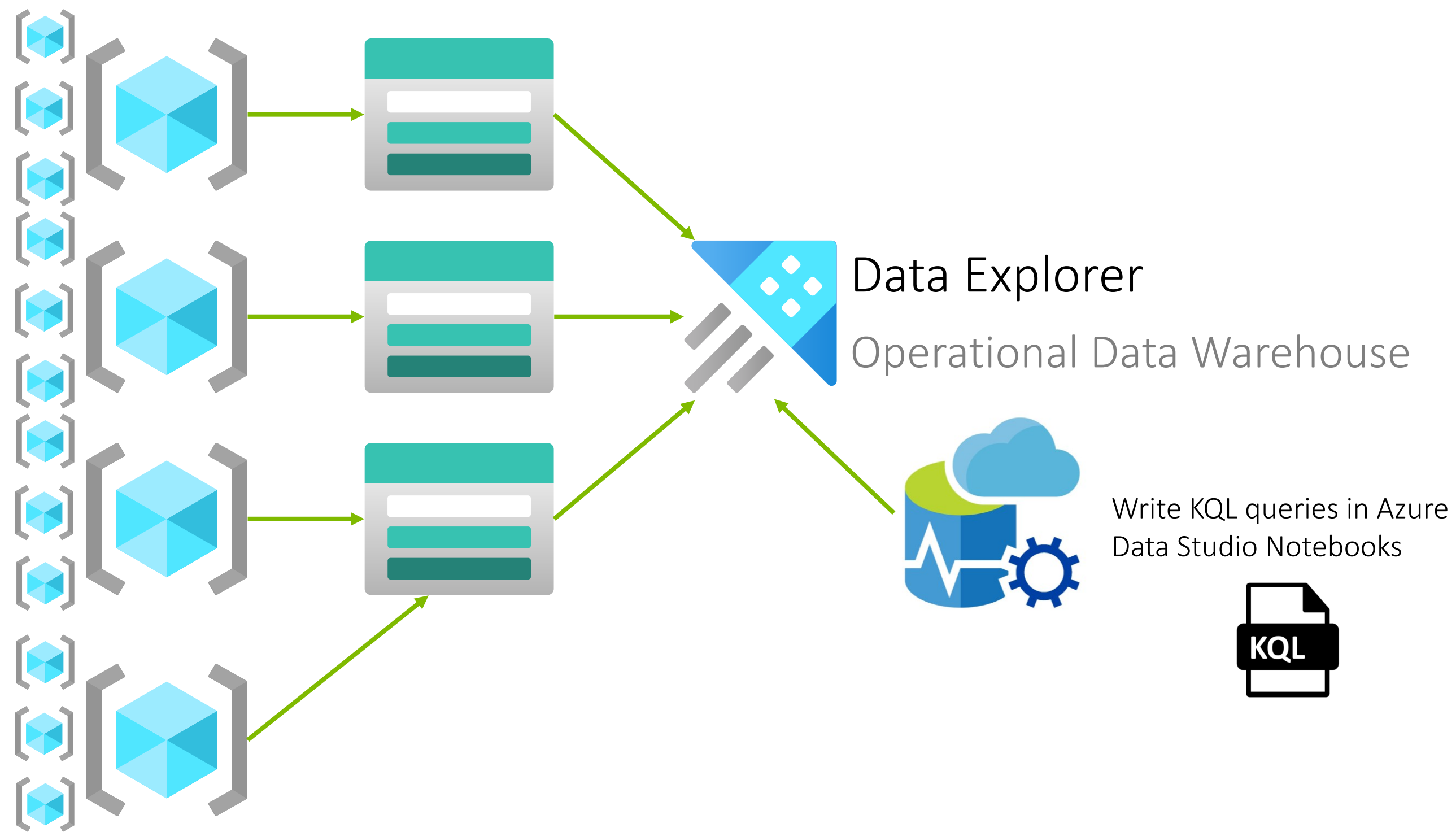




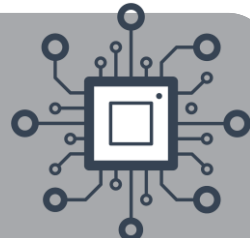
Using Data Explorer



Small/Medium

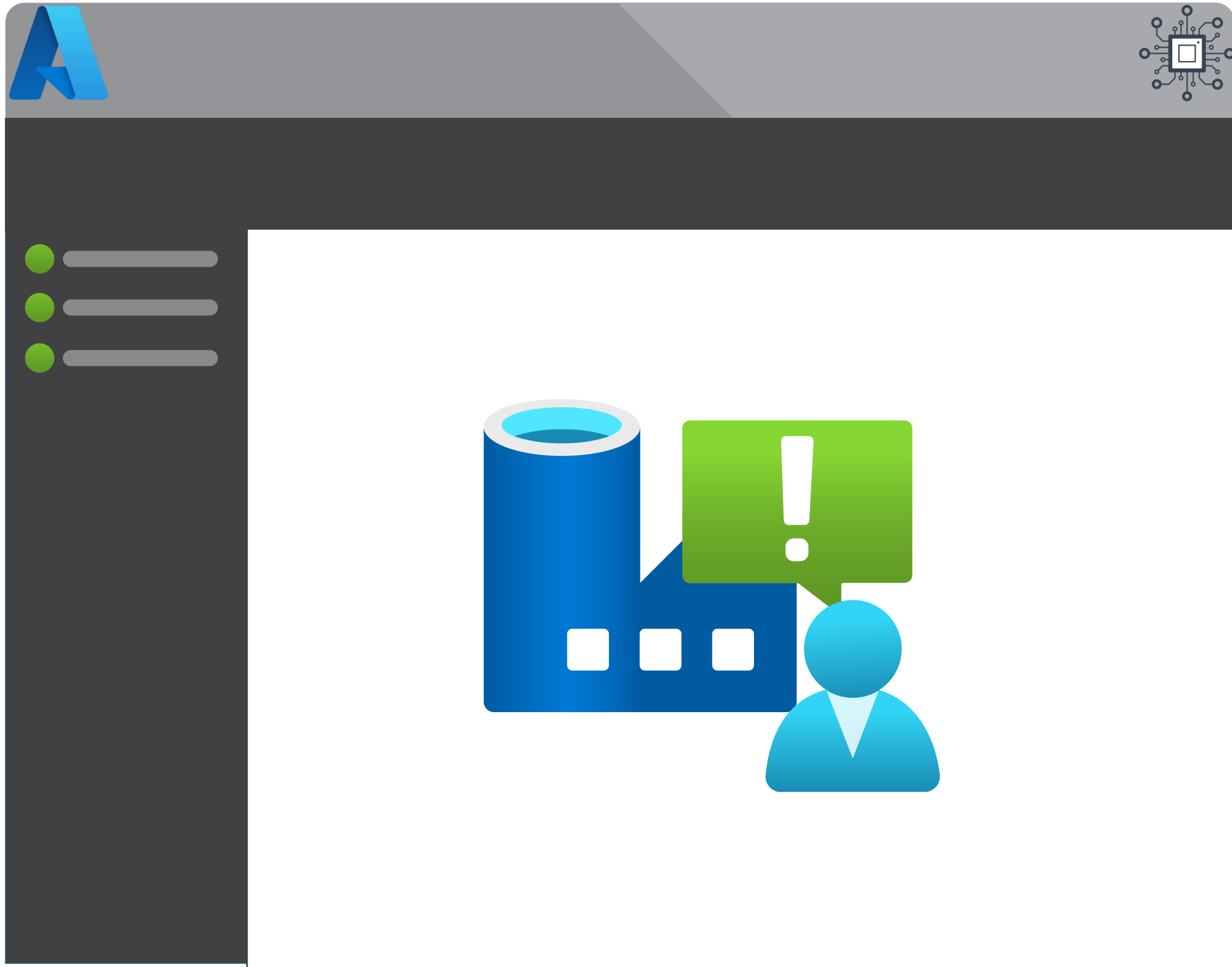


Large/Enterprise



Module 9

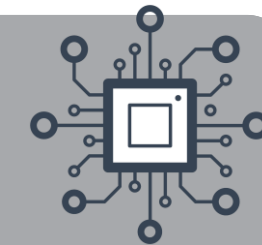
Monitoring & Alerting



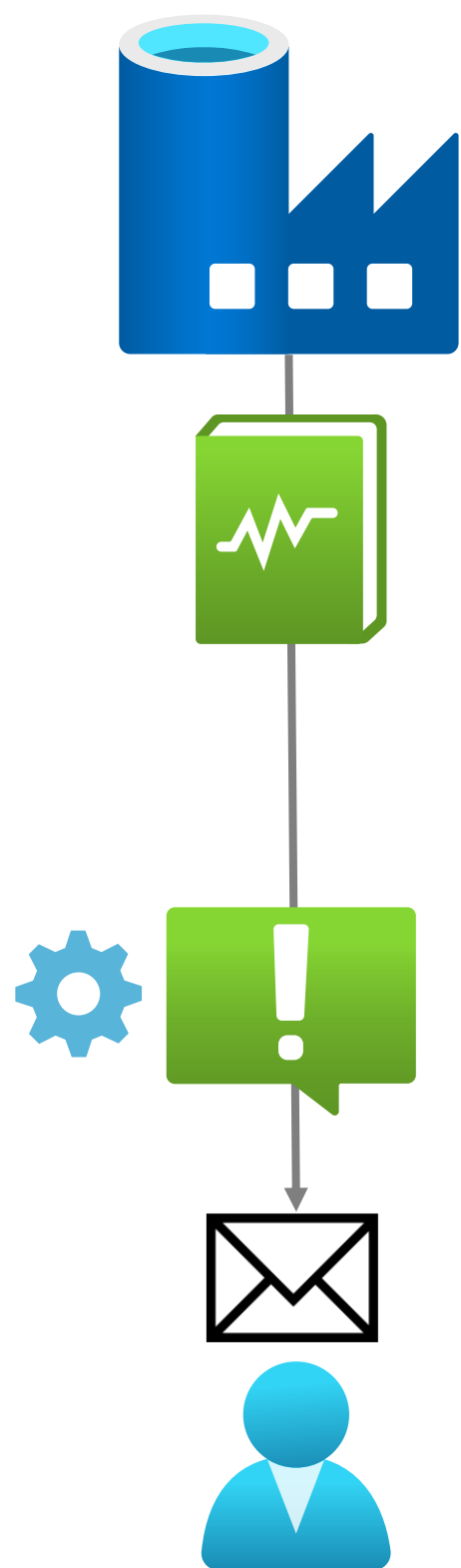
- Portal Monitoring
- Log Analytics & Kusto Queries
- Operational Dashboards
- Advanced Alerting



Alerting Options



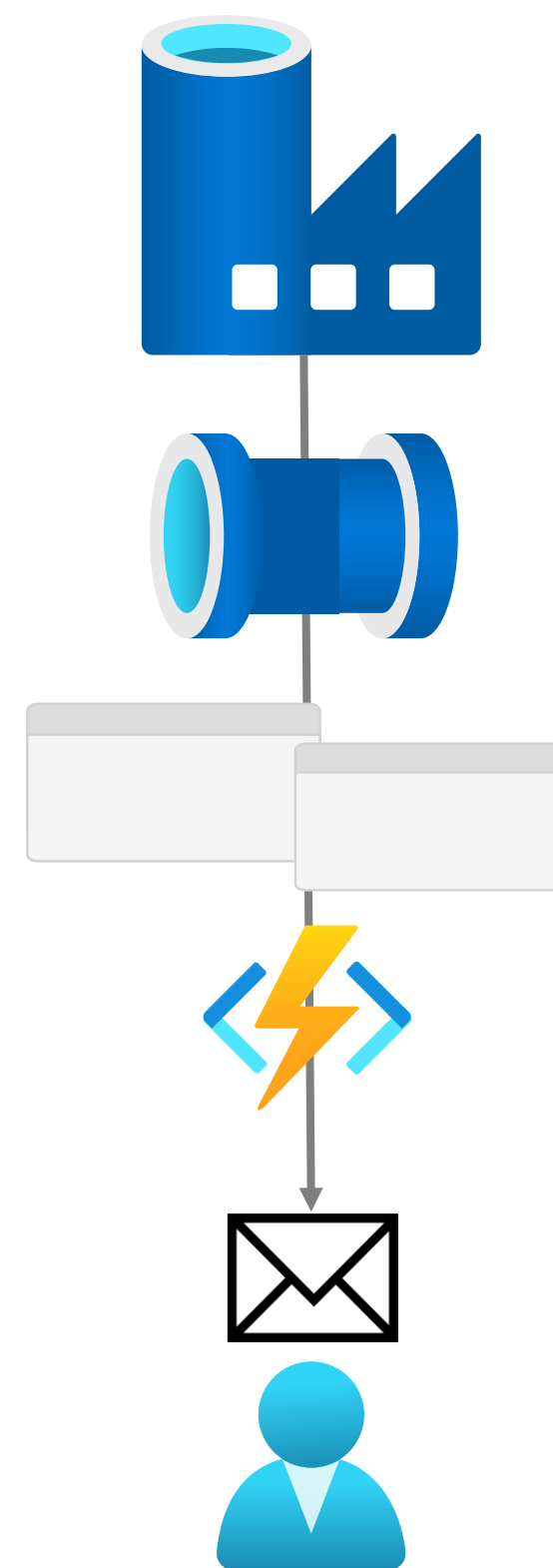
Data Factory Defaults

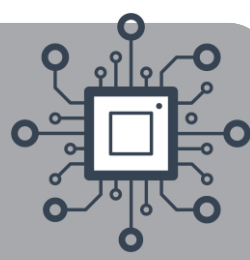


Custom Queries



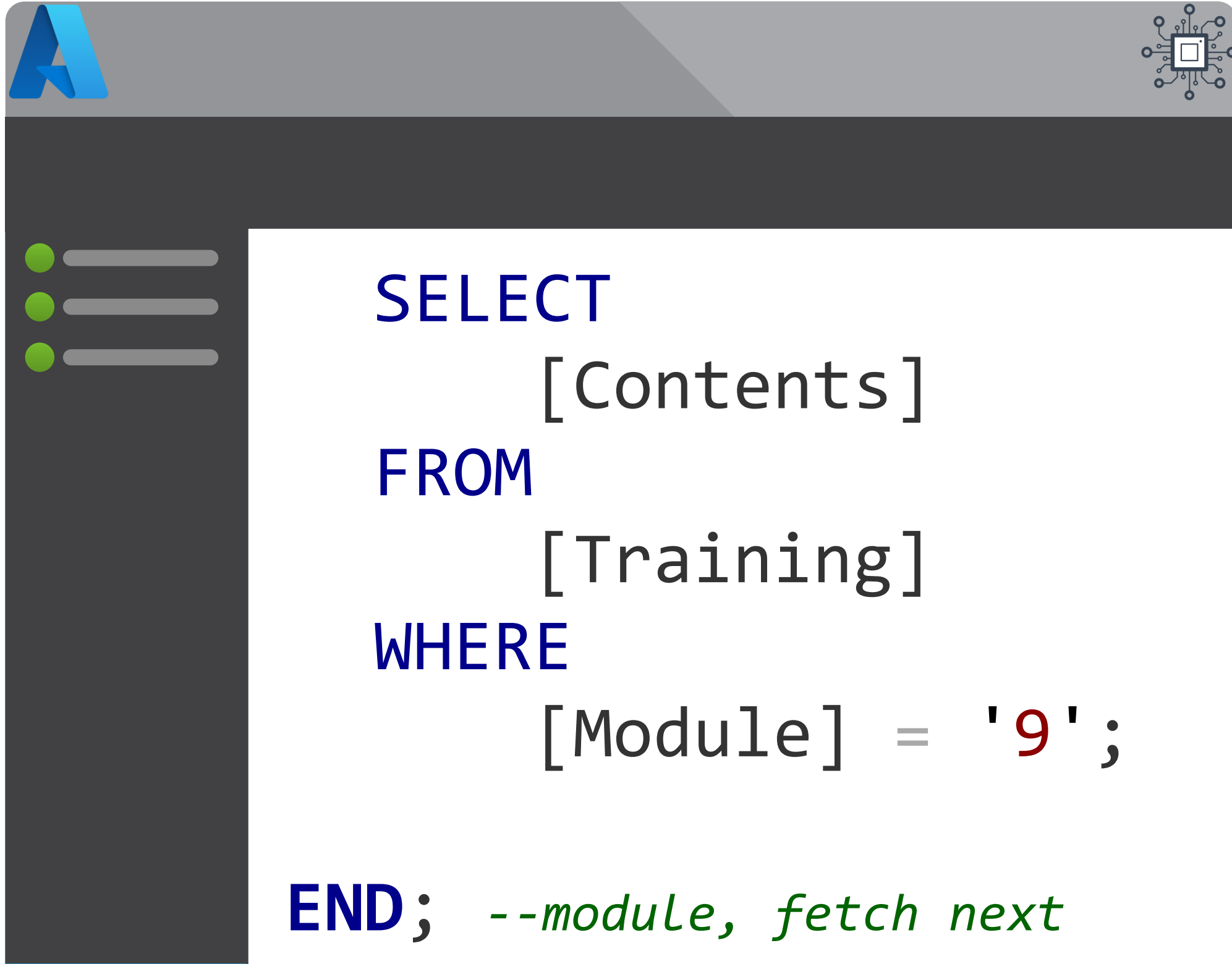
Custom Built Into Pipelines





Module 9

Monitoring & Alerting



- Portal Monitoring
- Log Analytics & Kusto Queries
- Operational Dashboards
- Advanced Alerting